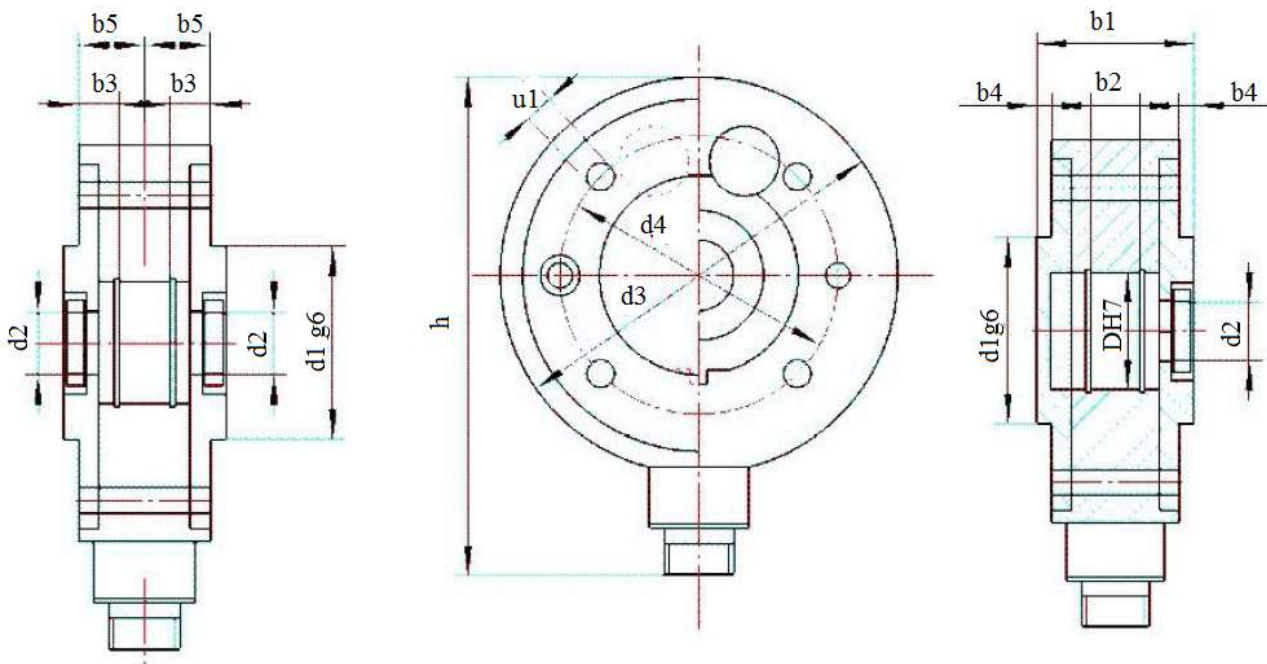


TS530

Features & Applications



- Tight design and easy to install.
- Double direction overload protection.
- Axis could be customized with shear beam construction.
- Mainly use for measuring the tension force, like paper making, textile process, deal with coiled material of cable industry.



Size: mm

Bearing	Capacity(N)	D	d1	d2	d3	d4	b1	b2	b3	b4	b5	h	u1	deformation	Weight (kg)
9	100/50/33	26	50	14	94	64	37	8	11.35	3	15.25	126.5	5.5	0.13	1.5
12	500/250/125/50	32	50	16	100	70	37	10	10.35	3	15.25	132	6.6	0.15	1.6
17	1500/750/500/250/125/50	40	60	22	105	75	37	12	9.35	3	15.25	137	6.6	0.15	1.7
20 or 25	1500/750/375/200/125	52	70	31	125	95	95	15	12.2	4	19.6	157.5	6.6	0.20	2.9
35 or 40	3000/1500/750/375	80	100	44 or 48	175	135	135	21	18.1	4	28.5	207.5	9	0.35	8.3

TS530

Specifications	Technique
Capacity	50,100,150,200,250,500,750, 1000,1500,2000,3000N
Overload rate	1000%
Excitation Voltage	12DC/AC
Output	0-20mV
Composite error	1.0%F.S.
Error of linearity	1.0%F.S.
Repeatability	0.05%F.S.
Temp.effect on output	0.05%F.S./10°C
Humidity	0.05%F.S./10°C
Specification of interface	WS20
Material	Stainless steel

Wiring Code

