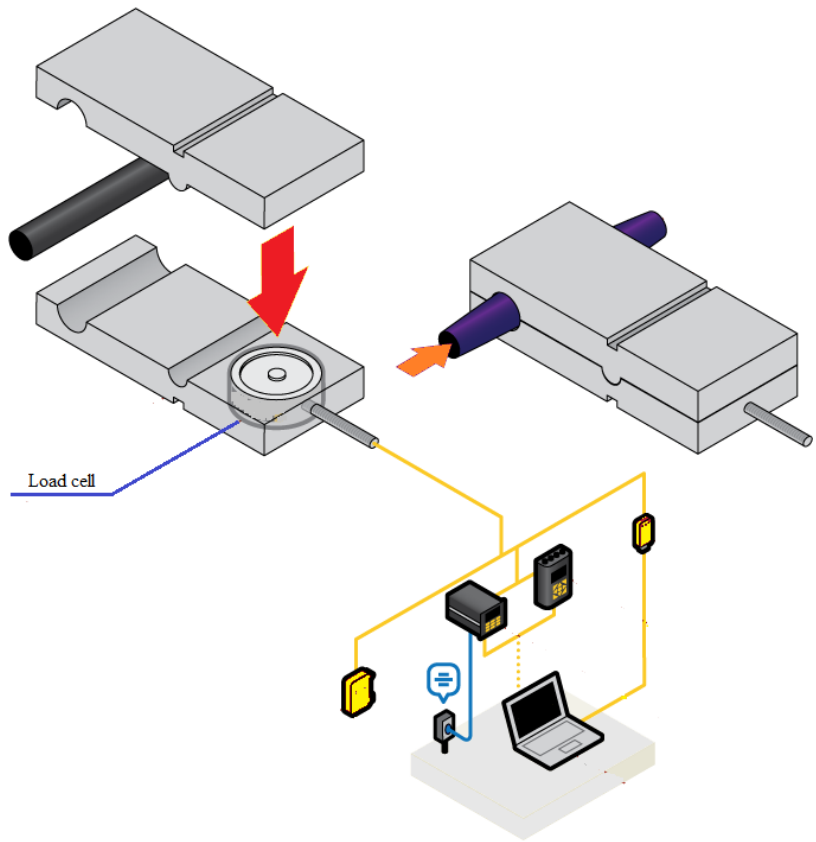


Application:

Utilizing a Load Button Load Cell, engineers can measure the expansion of a tube as fluid moves through it.

Load Button Load Cell is installed between two plates. Also located between these plates is a process tube. As fluid flows through the process tube, its diameter expands. The unique design of this plate (pivot points), allows for this expansion to occur. As the tube expands, the top plate begins to apply force measurements onto the load cells' button. This applied force is then streamed to one of several instrument options - a digital display, an amplifier, or a USB module.



TS1 Load Button website:

<http://www.gathertechnology.com/Productlist.asp?SortID=80>