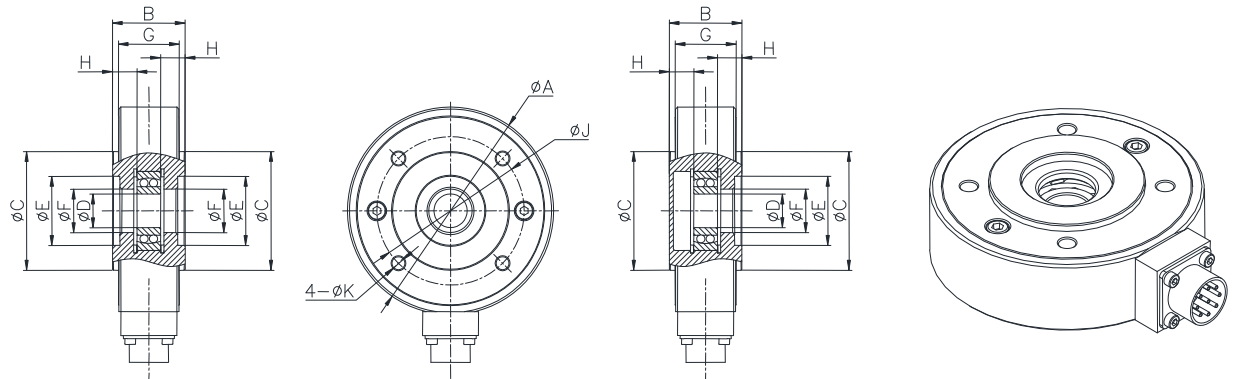


Mounting Dimension

TA201



| D | Capacity(N) | Size(mm) | | | | | | | | | | weight kg |
|----|--------------------------------------|----------|----|-----|-----|----|----|-------|-----|-----|------------------------------|--------------|
| | | A | B | C | E | F | G | H | J | K | strain | |
| 9 | 100/50/20 | 94 | 37 | 50 | 26 | 14 | 31 | 14.35 | 64 | 5.5 | 0.13 | 1.5 |
| 12 | 500/200/100/50 | 100 | 37 | 50 | 28 | 16 | 31 | 13.35 | 70 | 6.6 | 0.15 | 1.6 |
| 17 | 1000/500/ 200/100/50 | 105 | 37 | 60 | 35 | 22 | 31 | 12.35 | 75 | 6.6 | 0.15 | 1.7 |
| 20 | 1500/1000 500/200/100 | 125 | 48 | 70 | 45 | 31 | 40 | 16.2 | 95 | 6.6 | 0.20 | 2.9 |
| 35 | 3000/2000 1000/500 | 175 | 66 | 100 | 58 | 44 | 58 | 22.1 | 135 | 9 | 0.35 | 8.3 |
| 50 | 12000 6000 3000 1500 750 | 225 | 76 | 130 | 80 | 64 | 68 | 24.1 | 175 | 11 | 0.10 0.52 0.30 0.30 | 15.0 |
| 65 | 25000 10000 5000 2500 | 270 | 81 | 160 | 100 | 80 | 73 | 23.6 | 220 | 11 | 0.10 0.95 0.60 0.50 | 22.5 |

TA201

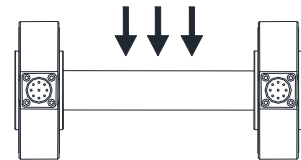


| Specifications | Technique |
|------------------------|-----------------|
| Capacity | 20N~25kN |
| Rated output | 2.0±0.2% mV/V |
| Zero balance | ±2% F.S. |
| Non-linearity | 0.25%F.S. |
| Hysteresis | 0.25%F.S. |
| Repeatability | 0.1%F.S. |
| Creep(30min) | 0.1%F.S. |
| Temp.effect on output | 0.05%F.S./10℃ |
| Temp.effect on zero | 0.05%F.S./10℃ |
| Input impedance | 410±10Ω |
| Output impedance | 350±5Ω |
| Insulation | ≥5000MΩ/100VDC |
| Recommended excitation | 10V |
| Maximum excitation | 15V |
| Compensated temp range | -10~60℃ |
| Operation temp range | -20~80℃ |
| Safe overload | 120%F.S. |
| Ultimate overload | 150%F.S. |
| Cable size | Φ5×3000mm |
| IP Class | IP65 |

Features & Applications

- Static torque sensor
- Compact structure,easy to install
- IP65 protection
- Super-strong ability of overload protection

Load Direction



Wiring Code

