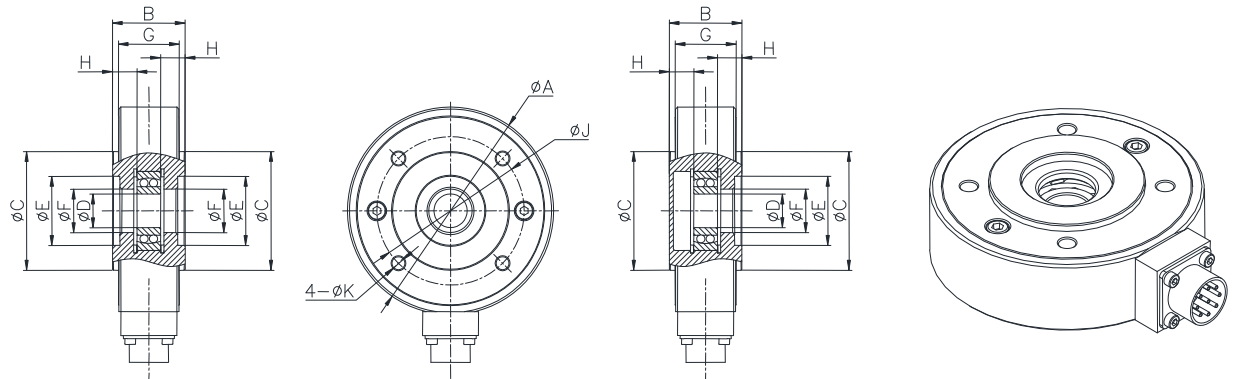


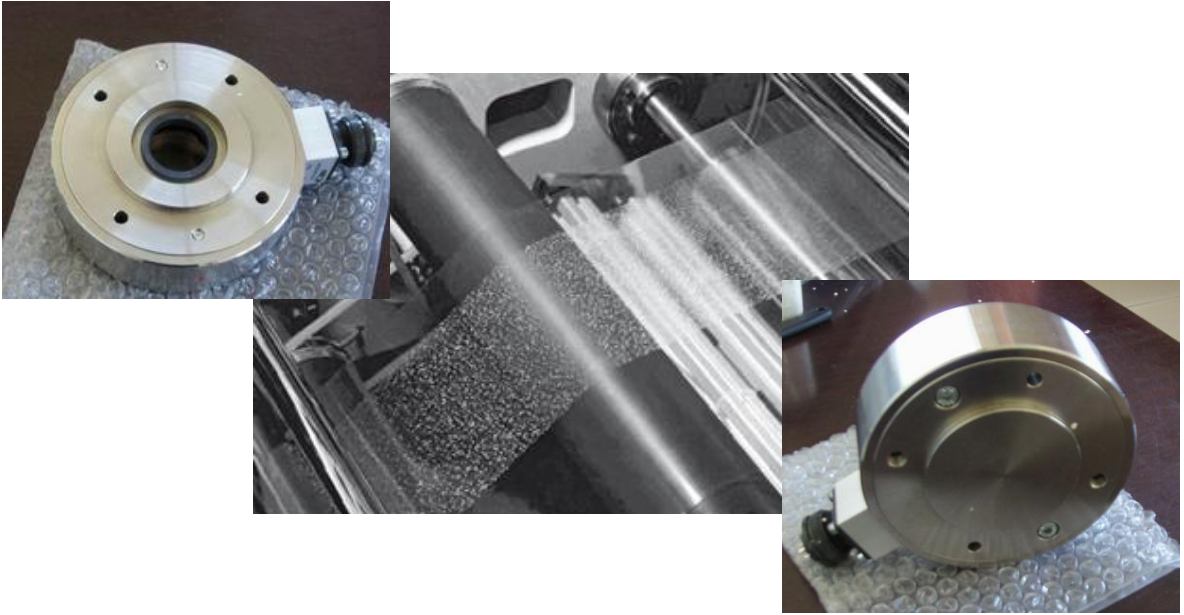
TS911

Mounting Dimension



D	Capacity(N)	size (mm)										weight kg
		A	B	C	E	F	G	H	J	K	Strain	
9	100/50/20	94	37	50	26	14	31	14.35	64	5.5	0.13	1.5
12	500/200/100/50	100	37	50	28	16	31	13.35	70	6.6	0.15	1.6
17	1000/500/ 200/100/50	105	37	60	35	22	31	12.35	75	6.6	0.15	1.7
20	1500/1000 500/200/100	125	48	70	45	31	40	16.2	95	6.6	0.20	2.9
35	3000/2000 1000/500	175	66	100	58	44	58	22.1	135	9	0.35	8.3
50	12000	225	76	130	80	64	68	24.1	175	11	0.10	15.0
	6000										0.52	
	3000										0.30	
	1500										0.30	
	750										0.30	
65	25000	270	81	160	100	80	73	23.6	220	11	0.10	22.5
	10000										0.95	
	5000										0.60	
	2500										0.50	

TS911

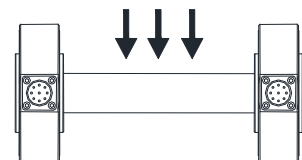


Specifications	Technique
Capacity	20N~25kN
Rated output	2.0±0.2% <i>mV/V</i>
Zero balance	±2% F.S.
Non-linearity	0.25%F.S.
Hysteresis	0.25%F.S.
Repeatability	0.1%F.S.
Creep(30min)	0.1%F.S.
Temp.effect on output	0.05%F.S./10°C
Temp.effect on zero	0.05%F.S./10°C
Input impedance	410 ± 10Ω
Output impedance	350 ± 5Ω
Insulation	≥5000MΩ/100VDC
Recommended excitation	10V
Maximum excitation	15V
Compensated temp range	-10~60 °C
Operation temp range	-20~80 °C
Safe overload	120%F.S.
Ultimate overload	150%F.S.
Cable size	Φ5×3000mm
IP Class	IP65

Features & Applications

- Static torque sensor
- Compact structure,easy to install
- IP65 protection
- Super-strong ability of overload protection

Load Direction



Wiring Code

