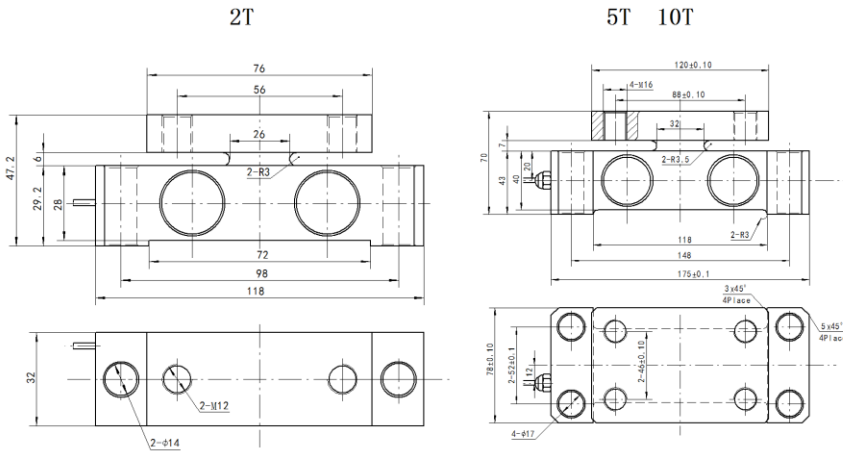


# THR950

## Mounting Dimension



Specifications	Technique	
	2T	5T/10T
Capacity		
Rated output	1.5±0.01mV/V	2±0.01mV/V
Zero balance	2%F.S.	
Non-linearity	0.05%F.S.	
Creep(30min)	±0.025%F.S.	
Temp.effect on output	0.016%F.S./10℃	
Temp.effect on zero	0.03%F.S./10℃	
Input impedance	770±30Ω	
Output impedance	700±7Ω	
Insulation	≥5000MΩ/ 50VDC	
Recommended excitation	5-12V	
Maximum excitation	18V	
Compensated temp range	-10~40℃	
Operation temp range	-35~70℃	
Safe overload	120%F.S.	
Ultimate overload	200%F.S.	
Cable size	Φ5.0 x 5m	
Material	Alloy steel	

## Features & Applications

- Capacities:2t,5t,10t
- Double ended shear beam
- Easy installation and reliable performance

## Wiring Code

